

# Learning the IET services designed for you

We're with you  
all the way

Your IET student  
membership

Maggie Zhang  
Membership Service Executive

# At a glance



- Professional Home for Life for Engineers and Technicians
- With a heritage reaching back over 140 years
- Nearly 160,000 members
- Spanning 127 countries
- World's largest institution offering Engineering Council registration
- World-class publications and knowledge resources
- A lifetime of professional development, qualifications and career support

**01** Your **First Destination** of membership

- MyIET
- 中文会员信息更新平台

**02** Go further in your **Academic Studies**

- Study and learning resources
- Knowledge resources

**03** Go further in your **Career**

- Job hunting resources
- Professional Development
- Events & Community

## What is MyIET?

Personalised area to

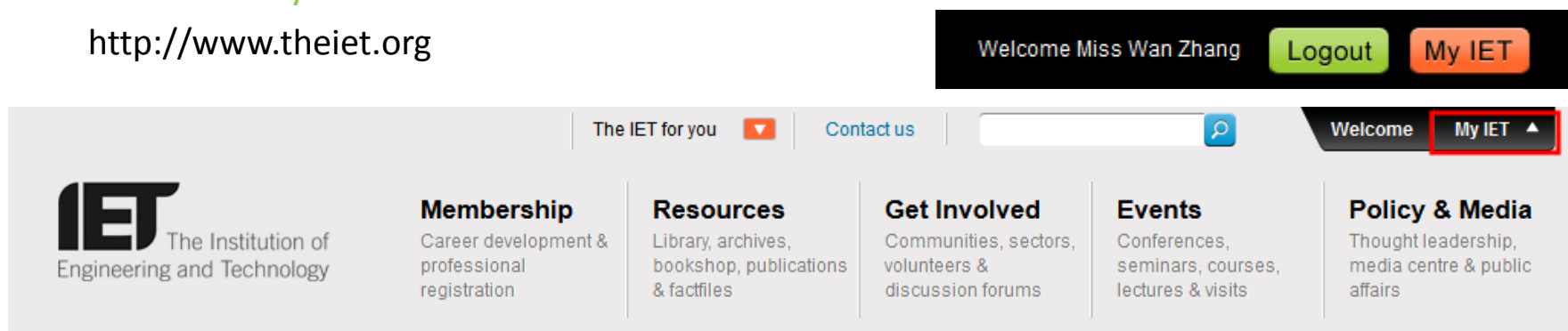
- Manage your membership online
- Update your profile and contact details
- Register for online service
- Build your IET network
- Set preferences for newsfeeds
- Choose which communication you'd like to receive from us

## How to register MyIET?



## Where is MyIET?

<http://www.theiet.org>



## Activity

Get a personalised view of the latest news and content matching your interest areas. You can track discussions, see upcoming events and read what your friends and colleagues have been doing.

## Communities

Manage your technical subjects and your local networks.

## Interests

Manage your area of interests, products and services, newsletters and government consultations .

## Public profile

Create and manage your optional public profile, which pulls together your involvement and contribution to the IET. You can share your interests, specialisation and achievements with other members and web site users.

## My details

Manage your personal information and contact preferences. You can also opt in to receive your IET diary.

## My account

Download receipts and documents and make membership payments.

## My Details

## Personal details

Membership/Account number **110029**

Name

Email

Username

Current password

New password

Verify new password

Please note your password must contain at least 8 characters, including 2 numbers, and must only contain the characters 0-9 and a-z

## Home details

 Set as my correspondence address

Address

Town/city

County

Postal

Country

Phone

Mobile

## Work details

 Set as my correspondence address

 I am not currently working

Job title

Department

Employer name

Address

Town/city

County

Postal

Country

Work phone

Fax

The IET

Suite G/10F

Chaoyang District

Beijing

100022

China

Activity

**Communities**

Interests

Public profile

My details

My account

## Communities

On this page you can sign up to receive marketing emails related to any of these subject areas or local communities. Visit [My Community](#) to connect with your peers, join communities and participate in community activities.

### Technical Subjects

Update

- Aerospace
- Antennas & Propagation
- Asset Management
- Automotive & Road Transport Sys
- Built Environment Technologies
- Comms Networks & Services
- Consultants
- Control & Automation
- Electromagnetics
- Eng for a Sustainable Future
- Functional Safety
- Healthcare Technologies
- History of Technology
- Management
- Manufacturing Enterprise
- Multimedia Communications
- Photonics
- Power Generation & Conversion
- Power Systems & Equipment
- Power Trading & Control
- Project Control
- Radar Sonar & Navigation
- Railway
- RF & Microwave Engineering
- Robotics & Mechatronics
- Satellite Systems and Apps
- Systems Engineering
- Tribology
- Vision and Imaging

Update

### Local Networks

On joining the IET, every member is automatically assigned to a Local Network depending on their main address.

**Your local network is:**

Beijing

The IET will send you information about activities in your local network, if you do not wish to receive information about locally organised activities in

**Beijing** then please tick 

Update

If you wish to receive information about the activities of other Local Networks, please select from the list below

Anglian Coastal

Add

Unassigned

Remove

You can join any Local Network in [My Community](#) in order to:

- access the latest news, professional development events, technical visits, conferences and seminars.
- discuss and share documents with your peers via discussion forums, blogs, webinars, videos and more.
- raise your professional profile by managing your online presence, engaging with your community and connecting with your peers.



[My Community](#) will enable you to put yourself at the heart of your community where you can share documents, videos, and web content including Twitter feeds and YouTube videos.

You can benefit from instant connection with your community, networking and engaging in conversations with fellow peers. By managing your online profile, you will be able to engage with your community and raise your professional profile.

The DocCreate tool, not available on any other social networking site, provides a secure environment for you to co-author documents and on completion, you can publish them in a variety of formats and share with your community.

# Interests

Home ▶ MyIET

[Share this page](#) [Share |](#)

Activity

Communities

**Interests**

Public profile

My details

My account

Summary of my choices

**Interests**

Newsletters

Saved events searches

We are committed to only sending you information that you will find relevant and interesting. Please tick your options below and click update when completed. Your choices will appear on your summary page.

## Areas of interest



### Built Environment

(Total selected 2)

#### Asset Management

Asset Management

#### Built Environment Technologies

Built Environment Technologies

Update



### Design and Production

(Total selected 5)

#### Biotechnology

Biotechnology

#### Consumer Technology

Consumer Technology

#### Control and Automation

Control and Automation

#### Manufacturing

Manufacturing

#### Measurement Technology

Measurement Technology

## Products and services

- Awards and Scholarships
- Books
- Career Development
- E&T jobs
- Education
- Events
- Flipside Magazine
- IET Standards
- Inspec
- Journals
- Library and Archives
- Magazines
- Membership Benefits
- Professional Registration
- Sector Insights
- Wiring Regulations and Electrical Courses

Update



# Public profile


Home ▶ MyIET [Share this page](#)[Share |](#)

Activity Communities Interests **Public profile** My details My account

Edit profile **View profile**

The address of your profile is <http://www.theiet.org/my/profile/wanzhang>

### My profile



[Favourite](#)

### Wan's IET involvement

Membership and qualifications

[Associate ▶](#)

### Wan's communities

TPNs

- [Asset Management ▶](#)
- [Consultants ▶](#)
- [Healthcare Technologies ▶](#)
- [History of Technology ▶](#)
- [Management ▶](#)
- [Multimedia Communications ▶](#)
- [Vision and Imaging ▶](#)

Local Networks

[Beijing](#)

[Help](#) | [Report this profile](#)

# Activities

**Activity** Communities Interests Public profile My details My account

**Interests** Add or remove your interests >

**News feed**

03 Jul **Catastrophic events: resilience of and recovery from incidents in the built environment (workshop afternoon)**  
London, GBR

03 Jul **Catastrophic events: resilience of and recovery from incidents in the built environment (evening lecture)**  
[More events >](#)

**IET notifications**

Your membership number is [redacted] You have full member-level access. If you wish to renew your membership, please visit the [My Membership](#) page to review your outstanding balance. Please let us know your home telephone number

[All membership messages](#)

# My accounts

Activity   Communities   Interests   Public profile   My details   **My account**

**Membership**   Books & journals

Date	Order number	Order summary	Amount / currency	Payment / status
07 Mar 2014	IE001443240	Membership application	5.80 USD	<a href="#">Pay now</a>

[Click here to return to the MyIET membership orders page](#)

Mary Smith Order Date: 7-Mar-2014  
Reference Number: 1100342894 Order Ref: IE001443240

**Billing Address**  
2 Test Street  
Test Town  
China

**Order Lines**

Description	Price (USD)
IET Membership Subscription	5.80
<b>IET Connect - Formerly the IET Benevolent Fund</b> IET Connect - the IET Benevolent Fund, provides practical, confidential information, advice and financial support to members and their families in need. It is entirely funded by member donations and legacies	
<b>Current Contribution</b>	<a href="#">Amend</a> <input type="text" value="0.00"/>
<b>Total Due: 5.80 (USD)</b>	


**Payment Options**

[Checkout with PayPal](#)   [Pay by Credit/Debit Card](#)

In the event of a problem please contact customer services on +44 (0)1438 765678 our opening hours are 08:00 - 18:00 Monday To Friday

The IET sites use cookies to provide functionality, as well as in collect for analytics and advertising.  
> Tell me more about IET cookies  
> Don't show this message again

<http://www.diaochaquan.cn/s/33AA8>



The Institution of  
Engineering and Technology

**IET会员信息更新** 退出此次调查

**会员基本信息 (Basic Information)** 已有 0 条评论

**\*1. 称谓 (Title)**  
<请问我们应该如何称呼您?>

- 先生 (Mr)
- 小姐 (Miss)
- 女士 (Mrs)
- 博士 (Dr)
- 教授 (Pro)
- 其它 (请注明)

**\*10. 会员号 (Membership No.)**  
<您在IET的会员号。请注意：会员号是您享有IET服务的最重要的凭证>

**\*11. 会员类型 (Membership Category)**

- 学生会员 (Student)
- 普通会员 (Associate)
- 专业会员 (MIET)
- 会士 (FIET)



# Student Web Zone

[www.theiet.org/students](http://www.theiet.org/students)



## I want to study engineering

- ▶ Why study engineering?
- ▶ Choosing your course
- ▶ IET accredited degree programmes
- ▶ Applying to UK universities
- ▶ Meet the students
- ▶ Join the IET

## I am studying engineering

- ▶ Access study resources
- ▶ Awards and scholarships
- ▶ Real student diaries
- ▶ Upgrade your membership
- ▶ Postgraduates
- ▶ Library and archives

## I am starting my career

- ▶ Early career support
- ▶ Graduate schemes
- ▶ Finding a job
- ▶ Professional development resources
- ▶ Work experience
- ▶ Gap year advice

## You and the IET



### You and the IET

IET student and apprenticeship membership benefits, what's happening on campus or at work; find it all out here.

## Events

27 Mar **Nuclear Engineering for safety, control and security**  
Bristol, GBR

27 Mar **The Viscount Nuffield / Mensforth Lecture**  
Glasgow, GBR

## News and features



### E&T Students and early career

The latest news and features for engineering and technology students, apprentices and graduates.

# Applying to UK universities

## The UK higher education system

## 英国高等教育系统

Find out more about the UK's well-respected higher education system, including the types of qualifications available, and the UK academic year timetable.

## UK universities

## 英国大学

For international students, applying to UK universities can seem like a daunting exercise, but this is not the case. As long as you give yourself enough time, the process is simple, and you should hopefully come out of it with a place at the UK university of your choice.

## UK living and study costs

## 英国生活、学习费用

International students: find out the costs of UK study: tuition fees, accommodation prices and other living costs.

## International scholarships

## 国际奖学金

Many International students need to apply for scholarships and grants to help them financially.

## UK immigration for international students

## 国际留学生移民

What visa, if any, do you need to study in the UK?

## Contacts for international students

## 常用的联系方式

Contact details for organisations supporting international students. These include organisations offering grant and finance advice, UK university course information and country-specific support groups.

# Meet the students

## Meet the students

Engineering students share their experiences, discussing the pros and cons of studying engineering and their career aspirations.



### Student diaries

### 学生日记

Want to know what a fresher's social life is really like or how tough final year coursework can be? How about what it's like to be an international or female student engineer? Each term our IET student bloggers write up a diary entry of their experiences that semester. Read on for a glimpse into their lives.



### Meet the students case studies

### 专业学习分享

Students studying a wide range of engineering and technology courses share their experiences.



### IET on campus - your stories

### IET学生会员的新闻

Find out what IET student members have been up to around the world through our section dedicated to news and reports on projects, competitions, charitable work and events.

# Study resources

## Revision toolkit

### 复习季指南

The revision toolkit offers advice on managing exam anxiety, keeping motivated during revision times, how to make the most of group revision sessions and ways to keep healthy throughout the exam period.



## Final year project guide

### 毕业项目

The final year project guide provides advice to help degree students throughout their final university project.



## A Guide to Technical Report Writing

### 技术报告

The technical report writing guide provides a number of articles to help students put together the perfect report.



## Units and Symbols for Electrical and Electronic Engineers

An in-depth resource for all engineering students.

### 单位、符号指南



## Publishing workshop

### 发表论文（视频）

Engineering and technology students - want advice on how to get your research papers published? Then take a look at the IET's clear and informative publishing workshop presentation.



## The IET Library

### IET图书馆

The IET Library is a great resource for engineering students, with an online catalogue that can be accessed worldwide and a free virtual library. Find out more...



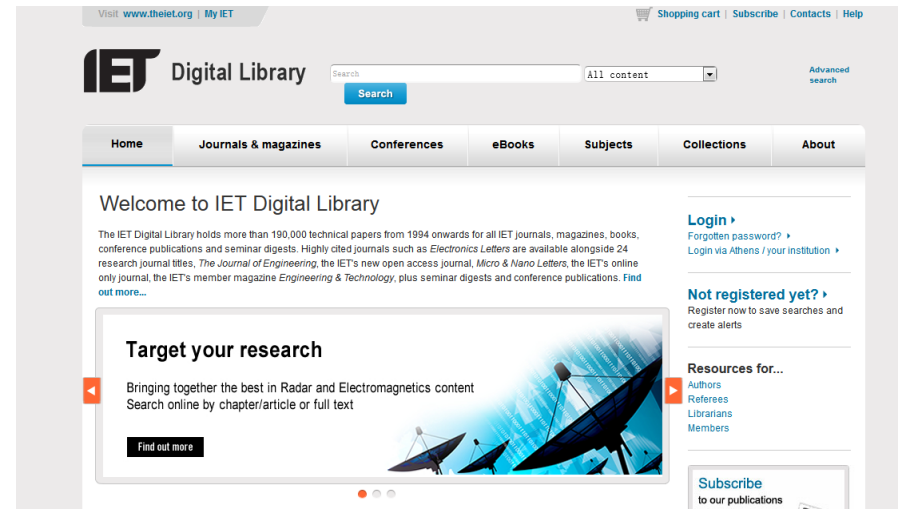
## Study and learning resources

### ■ Knowledge Pack

- Free Credits – 5 every year
- Additional Pack  
IET member: 25 credits for just £25  
Non member: 10 credits for just £75

### ■ IET Digital Library

- 190,000 technical documents
- ✓ 400 eBooks
- ✓ over 1,300 conference publications
- ✓ over 70,000 journal articles



[digital-library.theiet.org/](http://digital-library.theiet.org/)





## ■ IET On Campus

Home ▶ Students ▶ You and the IET ▶ On campus

Share |    

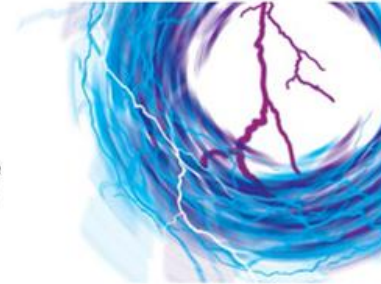
### IET on campus

IET on campus is designed to support everyone in the engineering faculty with students at the heart of it. We will give you access to tailored practical, technical and career-related resources and help you create links with industry and other universities, building a platform for you to demonstrate your skills and raise your profile.

### More energy on campus

Run by students for students, IET on campus is an initiative to provide you with the resources, connections, support and inspiration you need to launch your career with confidence.

[Get on board ▶](#)



#### More energy on campus



##### Overview

In an increasingly competitive job market, employers are hiring graduates who've taken the time to raise their profile by developing their interests and skills outside of their course.

#### Setting up a student community



##### Get up and running

The IET supports young engineers and technicians around the world. Find out how you can create an on campus student community at your university by following our steps to getting started.

#### Student member activity



##### Your stories

Find out what IET student members have been up to around the world through our section dedicated to news and reports on projects, competitions, charitable work and events.

#### Engage with Student Zone



##### Student Zone

Join our online student community. Start your own discussions, showcase your stories and events and lets others know what you are doing on campus.

#### News and features



##### E&T Magazine: students & early career

A great way for students, apprentices and graduates to keep up-to-date with what's going on in the engineering and technology industry.

#### Follow us on Twitter



##### @IE Tearlycareer

Dedicated to updates, news and features for engineering students, apprentices and recent graduates. Follow us, join the debate and share your on campus stories.

- *Engineering and Technology (E&T)*

[www.EandTmagazine.com](http://www.EandTmagazine.com)

- *E&T magazine for students*

[www.EandTmagazine.com/explore/students](http://www.EandTmagazine.com/explore/students)

- *E&T newsletters*

[www.EandTmagazine.com/magazine/eNews.cfm](http://www.EandTmagazine.com/magazine/eNews.cfm)



■ IET.tv

[www.theiet.org/tv](http://www.theiet.org/tv)



### **An introduction to graduate schemes**

A graduate scheme is a great way to start work for a large company, gain experience in many areas and integrate yourself into the workplace after university.

### **How to plan your job search**

Creating the perfect job hunting plan can help you to focus your job search more efficiently.

### **What employers look for**

The top skills and abilities employers look for in graduate scheme recruits.

### **Psychometric tests simplified**

Demystify psychometrics and reveal what these assessments actually involve and are being used to achieve.

### **Recruitment tests - an introduction**

An introduction to some of the recruitment tests you may come across when applying for a job.

### **Meet the employers**

Engineering and IT graduate scheme providers and their programmes.

### **Meet the graduates**

Engineering and IT graduates share their grad scheme experiences.

### **Benefits of accredited schemes**

An IET accredited scheme is quality assured, meaning you'll be choosing a programme with the best support for professional development and career progression.



# Graduate Schemes

- Upgrade your IET Membership  
Member with designatory letter **MIET**



- Engineering & Technology jobs

[www.theiet.org/jobs](http://www.theiet.org/jobs)



## ■ Career Manager

- Online competence development and recording tool
- Skill profiling against recognised competence frameworks
- One central place to collate all your career information, achievements and experience

[www.theiet.org/career-manager](http://www.theiet.org/career-manager)



## ■ Professional Registration

- 4 types: **CEng**    **IEng**    **EngTech**
- Competence based assessment
- Governed by EC<sup>UK</sup> UK-SPEC

**ICT Tech**



[www.theiet.org/profreg](http://www.theiet.org/profreg)



IET International HealthTech Conference (IHT) 2014

2014 IET国际健康科技会议



## ■ Event

May 2014 Nanjing China	2014 International Conference on Information and Communications Technologies (ICT 2014)
22 May 2014 Beijing	2014 Communications Security Conference (CSC2014)
September 2014 Beijing China	The 10th International Conference on Wireless Communications, Networking and Mobile Computing (WiCOM 2014)
October 2014	2014 International Conference on Space Communications and Inernet (SCI 2014)
October 2014	The 6th International Symposium on Fluid Machinery and Fluids Engineering (ISFMFE 2014)
TBC Haikou China	The IET International Conference on Wireless Communications and Applications (ICWCA 2013)
November2014	2014 International Conference on Information and Network Security (ICINS 2014)

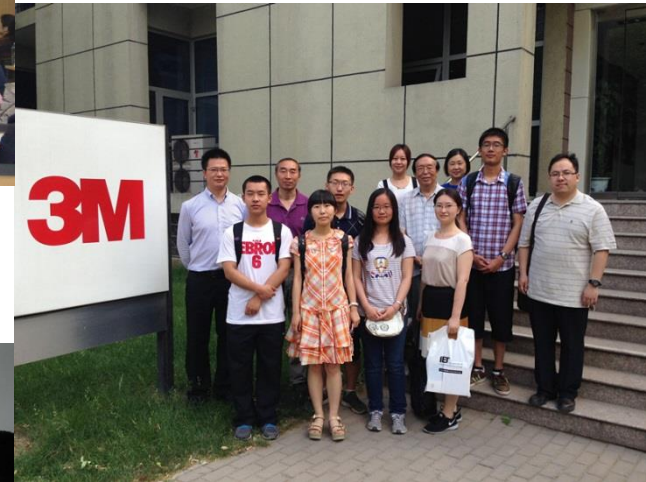
2014 IET Transport Sector Technical Conference on Electric Vehicles

2014 IET 电动汽车会议



## ■ Community

- Local Event
- Networking
- Technical Visit
- Professional Lecture
- Technical Speech





## ■ My Community

- Online professional networking and collaboration platform
- Connect, interact, exchange ideas

[www.theiet.org/mycommunity](http://www.theiet.org/mycommunity)

## ■ 微博

 @IET英国工程技术学会



## ■ 微信



# How to contact with us?

- Membership Service Team, IET Beijing Office
- Jenny Li      Maggie Zhang
- 010 6566 4687 extn 291 / 110
- [jennyli@theiet.org](mailto:jennyli@theiet.org)
- [mzhang@theiet.org](mailto:mzhang@theiet.org)